



THE TOEFL® TEST PARENT'S GUIDE

Authorized Distributor of the

TOEFL® Primary™ Tests

From ETS

Authorized Distributor of the

TOEFL Junior® Test

From ETS

Authorized Distributor of the

TOEFL ITP® ASSESSMENT SERIES

From ETS

ENGLISH BOOK EDUCATION

HIGHER EDUCATION

Teaching/Learning Platforms;
Administration Systems;
Digital Content
Management/e-learning
solutions;
Outsourcing.

PRIMARY & SECONDARY SCHOOL EDUCATION

Preschool – Teenage core
and supplementary course
material, products and
services.

PRESCHOOL EDUCATION

A wide range of materials
from Macmillan Education
to provide young children
with an organised,
well-managed, stress-
free environment which
enables them to develop
self-esteem, confidence
and competence from the
start.

LANGUAGE SCHOOL EDUCATION

Preschool through
to adult;
Modern digital and
printed resources;
The *TOEFL*[®] Test;
PTE (Pearson Test of English);
ESP custom to specific
professional areas.

TEACHERS' PROFESSIONAL DEVELOPMENT

Professional Development;
English Language Teacher
Training;
ELT Conferences;
Classroom Observations;
Customised Teacher
Training Sessions.

QUALIFICATION & CURRICULA

The *TOEFL*[®] Test Center;
Exclusive representative of
Pearson Test of English;
Curricula development for
various projects.

CONTENT

1

The *TOEFL*® Family of Assessments;

2

The *TOEFL Primary*® Tests;

3

Why use the *TOEFL Primary*® Tests?

4

How to use the *TOEFL Primary*® Tests;

5

English Teaching Standard for the *TOEFL Primary*® Tests;

6

The *TOEFL Primary*® Tests and Macmillan English;

7

The *TOEFL Junior*® Standard Test;

8

Why the *TOEFL Junior*® Standard Test?

9

HMC Projects Scholarship program;

10-11

English Teaching Standard for the *TOEFL Junior*® Standard Test;

CONTENT

12

The *TOEFL Junior*[®] Standard Test and Beyond;

13

Lexile[®] Library;

14

The *TOEFL ITP*[®] Assessments Series;

15

Why use the *TOEFL ITP*[®] Tests?

16

Mapping the *TOEFL ITP*[®] Test Scores to the CEFR;

17

The *TOEFL ITP*[®] Tests around the world;

18

English Teaching Standard for the *TOEFL ITP*[®] Tests;

19-20

10 tips on how to pass the *TOEFL*[®] Tests;

21-22

10 tips on how to prepare for the *TOEFL*[®] Tests.

THE TOEFL® FAMILY OF ASSESSMENTS

Each TOEFL® test is designed for a particular use, age range and proficiency range.

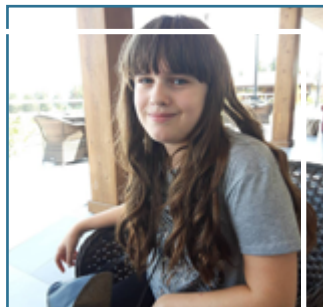
PROFICIENT	C2			
	C1			Authorized Distributor of the TOEFL ITP ASSESSMENT SERIES From ETS
INDEPENDENT	B2		Authorized Distributor of the TOEFL Junior Test From ETS	<ul style="list-style-type: none"> ▣ Placement ▣ Monitoring ▣ Advancement
	B1	Authorized Distributor of the TOEFL Primary Tests From ETS	<ul style="list-style-type: none"> ▣ Placement ▣ Monitoring ▣ Advancement 	<ul style="list-style-type: none"> ▣ Admissions to specific programs
BASIC	A2	<ul style="list-style-type: none"> ▣ Monitoring ▣ Advancement 		
	A1	<ul style="list-style-type: none"> ▣ Teacher Support 		
CEFR Levels (Common European Framework of Reference)		8+ years	11+ years	16+ years

THE TOEFL PRIMARY® TESTS



- ▣ Are the newest addition to the TOEFL® Family of Assessments;
- ▣ Assess the general English language proficiency of young students ages 8+;
- ▣ Provide a snapshot of each student's ability in reading and listening;
- ▣ Support teaching and learning by giving information about students' abilities in relation to a widely accepted international standard (CEFR);
- ▣ Are rooted in research and best practices in English language testing.

ANA VADACHKORIA



"As I have been studying English since the age of 5, I really wanted to check my knowledge and The TOEFL Primary® Test and detailed report helped me to understand what I know and where I need improvement. The TOEFL Primary® Test helped me to achieve my goals and to prepare future plans for my development in English language".

WHY USE THE *TOEFL PRIMARY*[®] TESTS?



- ▣ Detailed score reports with fast score turnaround;
- ▣ Descriptors with meaningful information for each section, including recommendations on next steps that students can take to improve their English language abilities;
- ▣ Students' abilities in relation to the Common European Framework of Reference (CEFR), a widely accepted international standard;
- ▣ Lexile[®] Reading Measures, makes it easier to find books and articles that best match students' English reading abilities.

HOW TO USE THE *TOEFL PRIMARY*[®] TESTS



- ▮ Guide your teaching goals;
- ▮ Monitor student progress;
- ▮ Identify students' strengths and areas of improvement;
- ▮ Determine instructional plans;
- ▮ Inform placement decisions, if appropriate;
- ▮ Focus your work with both individual students and groups;
- ▮ Shape your communication with parents about students' learning.

LEKSO KERATISHVILI



“My name is Lekso Keratishvili. I am 11 years old. The *TOEFL Primary*[®] Test is a good experience. First, I was so nervous, but then I got used to it. This test is very good to improve your skills and check your knowledge. Test is not difficult, but it is not easy too. The *TOEFL Primary*[®] Test helps you to understand general ideas of sentences that are often in everyday life. The *TOEFL Primary*[®] Test is the best way to increase your knowledge”.

ENGLISH TEACHING STANDARD FOR THE TOEFL PRIMARY® TESTS

Grade 3 (8 years old)

- ▢ Family and basic expressions about family or family members;
- ▢ School and the things connected with the school;
- ▢ Domestic animals;
- ▢ Human appearance.

Grade 4 (9 years old)

- ▢ Basic expressions;
- ▢ Basic vocabulary and phrases related to common objects and people;
- ▢ Short and simple utterances related to survival needs (e.g., simple request or directions);
- ▢ Short simple text relevant to their experiences (e.g., schedule or phone message).

Grade 5 (10 years old)

- ▢ High-frequency vocabulary;
- ▢ A simple short story and conversation on topics beyond personal experiences;
- ▢ A simple explanation of objects related to content-learning;
- ▢ Unfamiliar words given sufficient number of contextual clues.

Grade 6 (11 years old)

- ▢ Space, free time, nature, places and conversations on above mentioned topics beyond personal experiences or friends' experiences;
- ▢ Feelings and some unfamiliar words connected with feelings given by contextual clues;
- ▢ Compare stories and poems that talk about the same theme and the students are familiar with;
- ▢ Support ideas with facts and details from a text with newly taught words;
- ▢ Understand similes, metaphors and other figurative language discussed in the classroom;
- ▢ Use information from many different sources (books, articles, websites) to find an answer to a question or a problem;
- ▢ Participating in conversations and discussions not only by listening, but also by asking questions and adding their own ideas.

THE TOEFL PRIMARY® TESTS AND MACMILLAN ENGLISH

Macmillan English is a six-level best-selling series in British English. It is one of the first international English course books to be informed by lessons in Academic English classrooms. This was the main reason why Macmillan Education fitted Macmillan English to the *TOEFL Primary*® Tests and their structure.

Mapping is designed for second language learners of English and uses appropriate approaches to reading and listening as they are shown in the tests.

MACMILLAN ENGLISH 3							
UNIT	SECTION	CONTENT	ACTIVITY TYPE	SKILLS	PAGE	TASK NUMBER	TEST SKILLS
REVISION		Have got / has got; can	Listen and find the people	Listening	6	1	Listening: identify details
		Possessive pronouns; Genitive	Whose are these things?	Speaking	6	2	Speaking: give simple descriptions
		Present Continuous Tense	What are they doing? What are they wearing?	Speaking	7	3	Speaking: give simple descriptions
		Present Simple Tense	Who likes these things?	Speaking	7	4	Speaking: give simple descriptions, express opinions
		Past Simple Tense	Find the people. Who was in the market yesterday? Who worked yesterday?	Speaking	8	1	Speaking: give simple descriptions
			Listen. Who said this?	Listening	8	2	Listening: identify details
			What was it like in the city yesterday?	Speaking	9	3	Speaking: give simple descriptions
		Past Simple Tense	Was there a lot of...	Speaking	9	4	Speaking: give simple descriptions

THE TOEFL JUNIOR® STANDARD TEST



- ▣ The purpose is to assess the degree to which students aged 11+ have achieved A2 – B2 CEFR levels in school environment;
- ▣ Administered in paper-and-pencil and multiple-choice format;
- ▣ Curriculum independent;
- ▣ Takes 1 hour 55 minutes to complete;
- ▣ Measures:
 - « Listening;
 - « Language Form & Meaning;
 - « Reading.
- ▣ Quick score turnaround.

WHY THE TOEFL JUNIOR® STANDARD TEST?



- ▣ Paper-based mode is available in more than 50 countries;
- ▣ New test forms available each year to measure student's progress;
- ▣ Advise students on appropriate book selections based on Lexile® Measures to improve their reading proficiency.

Can help you:

- ▣ Determine whether students have sufficient communicative skills to succeed in a classroom that uses English for instruction;
- ▣ Place students in English language programs so they are matched with level-appropriate instruction;
- ▣ Monitor progress over time to gauge students' learning and proficiency;
- ▣ Use performance feedback, including can-do statements to instructors, to tailor English instruction and guide conversations with parents;
- ▣ To participate in HMC Projects scholarship program without passing an entry test.

HMC PROJECTS SCHOLARSHIP PROGRAM



HMC Projects is an association of the Headteachers of many of the leading independent schools in the United Kingdom.

The project offers Georgian students the opportunity to continue with their studies at many of Britain's top boarding schools through the scholarships. This is the seventh year the scholarship program has been offered in Georgia and Unique Learning organises student interviews and provides scholars with the support and advice. A number of students, who go for studying to the UK, increases every year.

ENGLISH TEACHING STANDARD FOR THE *TOEFL JUNIOR*[®] STANDARD TEST

Grade 7 (12 years old)

- ▮ Figure out the theme of something they read and support their answers with evidence from the text;
- ▮ Learn both the figurative and implied meaning of words and phrases;
- ▮ Identify specific claims or arguments in reading materials and decide how valid they are;
- ▮ Write arguments or opinion papers using clear reasoning and supportive facts;
- ▮ Write for longer periods of time for a number of different tasks and purposes;
- ▮ Participate in class discussions and do short research projects using many sources to answer a specific question.

Grade 8 (13 years old)

- ▮ Compare poems, stories and historical novels, explaining the plot of each and how the characters react to the action;
- ▮ Use a number of reading strategies to figure out the meaning of unfamiliar words;
- ▮ Analyse how a writer added meaning (for example, through the use of metaphor) and how the plot, characters and setting work together to tell the story;
- ▮ Look at how a writer uses different characters to show many points of view;
- ▮ Do short research projects by laying out questions to be answered and using many different sources of information to answer them.

Grade 9 (14 years old)

- ▮ Identify the exact meaning of something read and what is implied by the word choice, tone and use of language;
- ▮ Decide whether a writer's argument has enough good evidence and reasoning to back it up;
- ▮ Analyse why information is presented in one media format over another (for example, interactive maps vs. videos);
- ▮ Develop a vocabulary of academic words and phrases to use in writing and discussion;
- ▮ Make sense of figures of speech based on the context in which they are used.

ENGLISH TEACHING STANDARD FOR THE *TOEFL JUNIOR*[®] STANDARD TEST

Grade 10 (15 years old)

- ▮ Participate in discussions on various topics by stating ideas clearly and building on other people's ideas;
- ▮ Identify the speaker's argument or claims in an essay or debate. Figure out the reasons and facts used to back them up;
- ▮ Figure out the meaning of new words by using context clues (from the other words and sentences that are around the new word);
- ▮ Write in different styles for different reasons and types of readers;
- ▮ Connect ideas and information in writing in a natural and effective way.

Grade 11 (16 years old)

- ▮ Demonstrate understanding of figurative language and how it is used in writing to give a text more than one meaning;
- ▮ Talk or write about what they read; support ideas and opinions using specific examples about the text (what is explicitly stated in it and what is implied);
- ▮ Take a side or point of view on an issue; support it using reasoning, facts and other evidence;
- ▮ Do short and long-term research projects; present the information not only in writing, but also orally, with graphics or as a video presentation;
- ▮ Participate in group discussions by listening, presenting ideas and responding to other people's thoughts.

THE TOEFL JUNIOR® STANDARD TEST AND BEYOND

BEYOND is a 6-level course for teenagers, from A1+ to B2. The course is based on a detailed mapping onto the CEFR and international tests.

BEYOND's creative and dynamic approach to topics motivates students to engage with the material, making language learning more meaningful and successful. Throughout the course, language is recycled and reviewed, allowing students to assess and consolidate their progress.

BEYOND A2						
MAPPING OF SKILL BUILDING ACTIVITIES FOR THE TOEFL JUNIOR® STANDARD TEST						
SECTION	CONTENT	ACTIVITY TYPE	SKILLS	PAGE	TASK NUMBER	TEST SECTION, QUESTION TYPE
Work with words	Food and drink	Listen and complete the gaps	Listening	54	2b	Listening Comprehension: Short conversations; Identify important details
Reading: Speak and read	Identify who a text is for	Read and respond	Reading	56	2ab, 3,4	Reading Comprehension: Identify main idea; Identify important factual information; Recognise an author's purpose
Read and listen: Grammar in context	<i>A lot of, much, many, some and any</i>	Read/listen and respond	Reading and/or listening	57	1	Reading/Listening Comprehension: Short conversations; Identify important details
Study		Complete the gaps; find examples in the text	Read and write	57	2,3	Language Form and Meaning: Language form
Practise		Choose the correct option; complete the sentences	Read and write	57	5,6	Language Form and Meaning: Language form
Speak		Talk to a partner	Speaking	57	7	Language Form and Meaning: Language form

LEXILE® LIBRARY

The screenshot shows the Lexile Library website. At the top, there are navigation links: Home, Library, Your Bookshelf, Sign Up, and Log In. The Lexile logo and ETS TOEFL Junior logo are on the left. A search bar on the right says "Browse & Search the Library". The main heading is "Library: Recommended" with a subtext "715 books in 4 categories plus 6 reading lists." On the right, it displays "Your Lexile Measure: 900L" and "Your Book Range: 800L-950L" with a link to "Update Your Information". Below this, there's a "See Books In:" section with a "Sort by: Lexile Measure" dropdown and a "Page: 1 of 72" indicator. A sidebar on the left lists "All Your Categories" including Adventure, Fantasy, Graphic Novels & Comics, and Mystery, with an "Update Your Categories" link. The main content area shows a book titled "Picture Book of Lewis and Clark" by Adler, David A. (2003) with a Lexile measure of 800L AD. Below the book title are buttons for "Buy Online", "Add to bookshelf", and "Preview Online".

- ▢ Students can browse and search the Lexile® book database (50,000 titles);
- ▢ They indicate their interests to create and store a custom reading list;
- ▢ They can jump to online booksellers to purchase books or for more info;
- ▢ Online preview for some books, providing immediate practice;
- ▢ www.lexile.com

THE TOEFL ITP® ASSESSMENTS SERIES



The TOEFL ITP® Tests measure core English skills using 100% academic content similar to what is used in actual classroom tasks.

They can be used for:

- ▣ Placement;
- ▣ Progress monitoring;
- ▣ Exiting;
- ▣ Admissions to short-term, non-degree programs in English-speaking countries;
- ▣ Admissions to undergraduate and graduate degree programs in non-English speaking countries where the language of instruction is not English;
- ▣ Admissions and placement in collaborative international degree programs (such as student exchange programs);
- ▣ Scholarship programs.

WHY USE THE *TOEFL ITP*[®] TESTS?



- ▣ Multiple test forms for testing throughout the year;
- ▣ New test forms are released each year;
- ▣ Convenient, affordable and flexible local administration:
 - « Use local facilities and staff;
 - « Set your own test dates and times;
 - « Test groups of any size;
 - « Utilise multiple forms to measure progress.
- ▣ Fast scoring for timely feedback into students' learning plan;
- ▣ Better understanding of each student's proficiency with mapping to the CEFR and corresponding certificate;
- ▣ Students receive three section scores and a total score to identify specific areas of strength and areas to improve.

MAPPING THE TOEFL ITP[®] TEST SCORES TO THE CEFR

Listening Comprehension	Structure & Written Expression	Reading Comprehension	Total Minimum THE TOEFL ITP [®] Level 1 Test Scores	CEFR Levels	
64	64	63	627 points	C1	Proficient User – Effective Operational Proficiency
54	53	56	543 points	B2	Independent User – Vantage
47	43	48	460 points	B1	Independent User – Threshold
38	32	31	337 points	A2	Basic User – Vantage

THE TOEFL ITP[®] TESTS AROUND THE WORLD



There are three levels of certificates: Gold, Silver and Bronze.
Each corresponds to a CEFR level. Gold = C1, Silver = B2, Bronze = B1.

TOEFL ITP SCALE – Level 1
Listening Comprehension: 31–68
Structure and Written Expression: 31–68
Reading Comprehension: 31–67
Total: 310–677

TOEFL[®] ITP Score Descriptors and CEFR Levels

TOTAL minimum TOEFL [®] ITP scores	European CEFR Levels	CEFR General Descriptions
627 pts.	Proficient User—Effective Operational Proficiency C1	Can understand a wide range of demanding, longer texts, and recognise implicit meaning. Can express him/herself fluently and spontaneously without much obvious searching for expressions. Can use language flexibly and effectively for social, academic and professional purposes. Can produce clear, well-structured, detailed text on complex subjects, showing controlled use of organisational patterns, connectors and cohesive devices.
543 pts.	Independent User—Vantage B2	Can understand the main ideas of complex text on both concrete and abstract topics, including technical discussions in his/her field of specialisation. Can interact with a degree of fluency and spontaneity that makes regular interaction with native speakers quite possible without strain for either party. Can produce clear, detailed text on a wide range of subjects and explain a viewpoint on a topical issue giving the advantages and disadvantages of various options.
460 pts.	Independent User—Threshold B1	Can understand the main points of clear standard input on familiar matters regularly encountered in work, school, leisure, etc. Can deal with most situations likely to arise whilst travelling in an area where the language is spoken. Can produce simple connected text on topics which are familiar or of personal interest. Can describe experiences and events, dreams, hopes and ambitions and briefly give reasons and explanations for opinions and plans.

Note: The cut scores represent the minimum scores needed to enter the CEFR levels. These recommendations are based on the results of mapping studies with expert panels, and data analyses of test-takers scores.

This certificate is printed on security paper. Some of the security features are:

- i. Heat-activated security seal that disappears with repeated rubbing, but will come back when the temperature returns to normal
- ii. Watermark pattern that is visible only from a 45-degree angle on one side of certificate
- iii. "Void" in multiple languages if attempts are made to alter any information on the certificate with correction fluids
- iv. A unique "check sum" number that can be used to verify the authenticity of information on the certificate

Disclaimer: This is a certificate of achievement and is not intended to replace the official TOEFL ITP score report.

Copyright © 2011 by Educational Testing Service. All rights reserved. ETS, the ETS logo, LISTENING, LEARNING, LEADING, and TOEFL are registered trademarks of Educational Testing Service (ETS) in the United States and other countries. 17978

- ▣ More than 2,500 institutions in 50+ countries administered 800,000+ the TOEFL ITP[®] test worldwide annually;
- ▣ The TOEFL ITP[®] test scores are mapped to the CEFR as an international benchmark, with corresponding certificates as proof of achievement.

ENGLISH TEACHING STANDARD FOR THE TOEFL ITP® TESTS

A2 (Pre-Intermediate)

- Can understand sentences and frequently used expressions related to areas of most immediate relevance (e.g., very basic personal and family information, local geography, employment);
- Can communicate in simple and routine tasks requiring a simple and direct exchange of information on familiar and routine matters;
- Can describe in simple terms aspects of his/her background, immediate environment and matters in areas of immediate need.

B1 (Intermediate)

- Can understand the main points of clear standard input on familiar matters regularly encountered in work, school, leisure, etc.;
- Can deal with most situations likely to arise whilst travelling in an area where the language is spoken;
- Can produce simple connected text on topics which are familiar or of personal interest;
- Can describe experiences and events, dreams, hopes, ambitions, and briefly give reasons, explanations for opinions and plans.

B2 (Upper-Intermediate)

- Can understand the main ideas of complex text on both concrete and abstract topics, including technical discussions in his/her field of specialisation;
- Can interact with a degree of fluency and spontaneity that makes regular interaction with native speakers quite possible without strain for either party;
- Can produce clear, detailed text on a wide range of subjects and explain a viewpoint on a topical issue giving the advantages and disadvantages of various options.

C1 (Advanced)

- Can understand a wide range of demanding, longer texts, and recognise implicit meaning;
- Can express him/herself fluently and spontaneously without much obvious searching for expressions;
- Can use language flexibly and effectively for social, academic and professional purposes;
- Can produce clear, well-structured, detailed text on complex subjects, showing a controlled use of organisational patterns, connectors and cohesive devices.

10 TIPS ON HOW TO PASS THE *TOEFL*[®] TESTS

1

Sleep well before the test to boost your memory - It is very important to get enough sleep the night before the exam. Sleeplessness creates tiredness and a tired mind cannot think straight, cannot concentrate and can create temporary memory loss.

We all think well when we are well rested. A clear, alert brain allows us to focus, learn and remember information, and to be creative.

2

Stay calm during the test - It is natural to feel stressed during a test, so do not panic. You will definitely want to develop a plan to take the test and get it done in time. If you feel tense or nervous, however, it is equally important to relax yourself mentally and physically. If you try your best to relax and think positive thoughts, you can concentrate and make it through!

3

Read and listen to the instructions carefully - Too often, candidates are in such a hurry to get on with answering that they neglect this crucial stage. Sometimes they misread the task or they make assumptions about what the task actually requires. Sometimes there are several parts to a task and the candidate only addresses some of them, leaving the task only partially completed. Being careless with instructions can seriously impact your score!

4

Try to stay as concentrated as possible on each question - How well you have mastered the skill of how to stay focused on the task at hand is going to determine your level of success. If you are able to stay focused on each question you will be productive, you will get things done and you will reach your goals in record time.

5

Take notes often and effectively while listening to the recording (The *TOEFL ITP*[®] Tests) - Notes are a useful record of key information, and the sources of that information. Notes help you remember what you heard. Taking notes helps you to concentrate and listen effectively. Selecting what to note down increases your understanding.

10 TIPS ON HOW TO PASS THE TOEFL® TESTS

6

Read all of the answer choices - After you have correctly identified the right type of answer, you always want to do a quick evaluation of the answers. If you do not read all the answer choices, you may make a mistake.

7

Answer every question - If you answer all the questions, you will have a higher chance to receive a high score.

8

Manage the time - You must control your time for each section of the test in order to completing in time limits.

9

Skip difficult questions and return to them later - Answer easy questions first. Quickly go through the test and fill in the blanks that you are sure you know. This will give you confidence, and it will “prime” your brain – you will be subconsciously working on the answers you skipped over. Then go back and answer the hard questions.

10

Use context clues in passages to figure out the meanings of unfamiliar words - When attempting to decipher the meaning of a new word, it is often useful to look at what comes before and after that word. The surrounding words can give readers helpful context clues about the meaning and structure of the new word, as well as how it is used.

10 TIPS ON HOW TO PREPARE FOR THE *TOEFL*[®] TESTS

1

Get to know the *TOEFL*[®] Tests format - Every section has specific questions and tasks. You may have never seen some of these questions and tasks before in your English classes, so it is very important to get some practice with them before your test day.

The topics that are discussed and the specific questions that are asked will change all the time, but the format of the *TOEFL*[®] Tests never changes. The test always has the same format! That is why the following information is very important.

2

Personalise your study plan - A study plan is an effective way to help you navigate through your education in an organised way. Every student will develop a different study plan; there is no correct study plan for everyone. When creating your personalised study plan, you will need to do some self-evaluation of your current schedule and time management.

You will have to identify your learning goals. Determine why you are studying and develop a plan that can help you achieve those goals.

3

Use high-quality resources - Searching for studying resources returns a staggering number of results. But how do you know which of those resources are any good? How do you know which will actually save your time, and make your studying more effective? That is why high-quality resources for your studying process are very important.

4

Do not multitask while studying - Multitasking can have a number of negative effects on learning. Since students are not giving their full attention to their studying, they are not as effective at absorbing the information while they are studying. Multitasking obstructing concentration, organisation and attention to detail.

5

Take notes while studying - Notes will help you understand what material is important and what material is only secondary. Note-taking provides students with direction, keeps them organised, and helps them keep up with their studies.

10 TIPS ON HOW TO PREPARE FOR THE TOEFL® TESTS

6

Study about 2 hours every day before the test - It is very helpful to study 2 hours every day before the test in order to achieve test desirable results. After you have covered all the materials you need for the test, going back through and reinforcing what you learned is important in getting the best grade possible.

7

Expand your vocabulary - You will be able to communicate (speak and write) more clearly and concisely, people will understand you more easily, and you will increase the perception (and reality) that you are an intelligent person.

Besides, acquiring a large vocabulary can benefit you at school, at work, and socially. It will enable you to understand others' ideas better and to have the satisfaction of getting your thoughts and ideas across more effectively.

8

Set time limits for each section of the test - You must manage your time for each section of the test in order to complete in time limits.

9

Use visual cues for easy memorisation - Visual cues help us to better retrieve and remember information. In fact, the part of the brain used to process words is quite small in comparison to the part that processes visual images.

Words are abstract and rather difficult for the brain to retain, whereas visuals are concrete and, as such, more easily remembered.

10

Complete a mock test before the test - If you complete a mock test before a test, you will then know where to focus your studying. Mock tests are a great opportunity for students to figure out and practise what works best for them. Mock tests can be used as a way of getting students to feel comfortable receiving feedback, which paves the way for further improvement and learning.

So, mock tests, if framed right, can be incredibly beneficial for students, helping them to see that is part of the challenge. They can help students to start revising early, to practise effective revision strategies, to improve their knowledge, to familiarise themselves with pressure, and act as a guide moving forward.



Contact us:

Address: #92 Vepkhistaosani Street, 3 m/d, Didi Dighomi
Direct Line: 0322 00 12 44 | E-mail: englishbookteam@englishbook.ge
Website: www.englishbookeducation.co.uk | www.onlinebookshop.ge
Facebook: English Book Education | Online Bookshop
Youtube: English Book Education/Channel

Authorized Distributor of the

TOEFL® Primary™ Tests

From ETS

Authorized Distributor of the

TOEFL Junior® Test

From ETS

Authorized Distributor of the

TOEFL ITP® ASSESSMENT SERIES

From ETS